

STITCH of the MONTH *fountain*



This delicate stitch has been used for centuries as a decorative panel alongside other lace motifs, as a standalone openwork panel or as an allover stitch as it is here. It is an understated, frugal kind of lace. Though it gives the appearance of "fancy work" it creates a lasting and durable fabric that will withstand the years. Fountain is a romantic stitch worked over a multiple of 9 stitches.

Let's give it a try...



worked flat

Worked back & forth in rows
Multiple of 10 sts + 1.

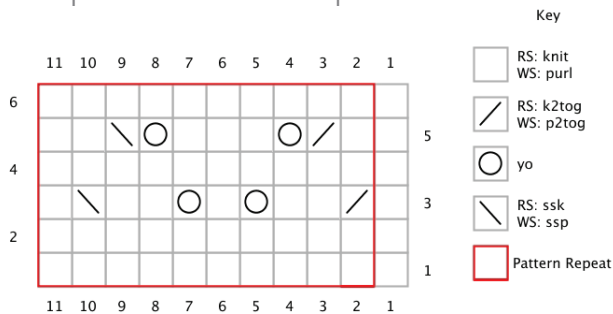
Row 1: (RS): Knit.

Row 2, 4 and 6 (WS): Purl.

Row 3: K1, *k2tog, k2, yo, k1, yo, k2, ssk, k1;
repeat from * to end of row.

Row 5: K1, *k1, k2tog, yo, k3, yo, ssk, k2;
repeat from * to end of row.

Repeat Rows 1-6 for pattern.



worked in the round

Multiple of 10 sts.

Rnds 1, 2, 4 and 6: Knit.

Rnd 3: *K2tog, k2, yo, k1, yo, k2, ssk, k1;
repeat from * to end of rnd.

Rnd 5: *K1, k2tog, yo, k3, yo, ssk, k2;
repeat from * to end of rnd.

Repeat rnds 1-6 for patt.

